

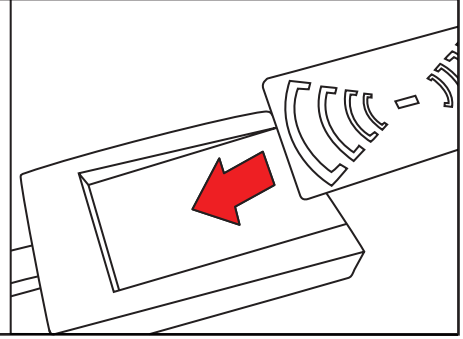
RFID Field Detector - 13.56MHz

MD100052

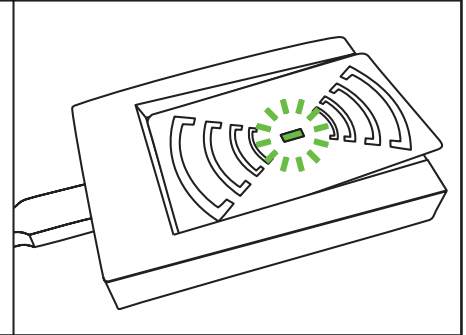


Step 1 - Place the Montie Gear 13.56MHz Field Detector near the reader.

The detector is compatible with ISO 14443 and Contactless Readers operating at 13.56 MHz. The detector detects the presence of the RF field. The detector does not detect tags.



Step 2 - If the LED indicator blinks or lights up, the field is active.



Contact Montie Gear at info@montiegear.com for privately labeled / custom branded devices with your company logo.

Note: This device does not detect RFID tags. This device detects the RFID field that triggers the tags.